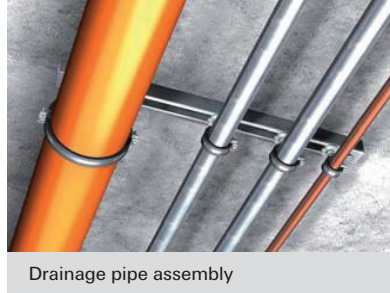


## fischer Pipe Clamps FRSR



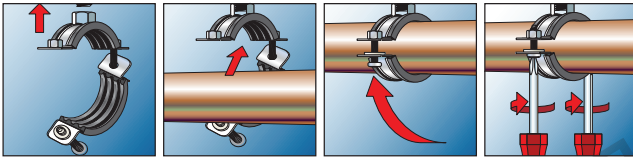
### PROPERTIES

- **Material:** Steel
- **Zinc plating:** Electro zinc plated 5 - 9  $\mu\text{m}$
- **Standard:** comply with ASTM B633 SC1  
Also available in SC3 on special request.  
Also available in dacromate finish 8.6 mm for more detail check annex (B)
- **Connecting nut:** resistance welded, M8, SW 13
- **Locking screw:** flat head screw with combination recessed head
- **Sound Insulation inserts:**  
Material EPDM: Chlorine fire, Silicon fire
- **Sound insulation:** acc. to DIN 4109
- **Temperature range:** -40 °C to +100 °C
- **Hardness:** 60  $\pm$  5° Shore

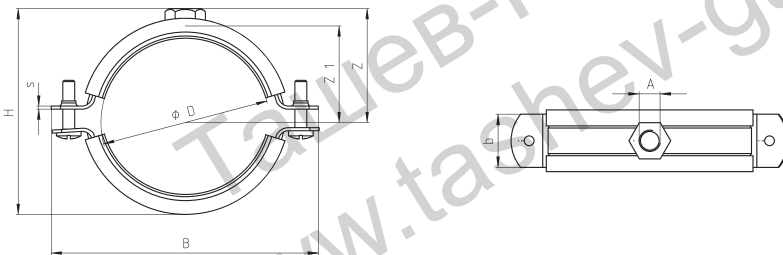
### ADVANTAGES/BENEFITS

- Simple installation due to large opening angle.
- Locking screw secured against loss.
- Combination connecting thread for cost-effective warehousing and flexibility at the construction site.

### INSTALLATION



### TECHNICAL DATA



Item	Art.-NO.	Qty. per box pcs.	Size (inch)	Clamping range D (mm)	s x b (mm)	Screw M	Thread diameter A (mm)	Recommended load N <sub>rec</sub> (kN)	Design load N <sub>d</sub> (kN)
FRSR 11-14 M8 / M10	534133	100	1/4"	11-14	1.2 x 20	M5 x 16	M8+M10	0.85	1.19
FRSR 15-19M8 / M10	534134	100	3/8"	15-19	1.2 x 20	M5 x 16	M8+M10	0.85	1.19
FRSR 20-25 M8 / M10	534135	100	1/2"	20-25	1.2 x 20	M5 x 16	M8+M10	0.85	1.19
FRSR 26-30 M8 / M10	534136	100	3/4"	26-30	1.2 x 20	M5 x 16	M8+M10	0.85	1.19
FRSR 32-36 M8 / M10	534137	100	1"	32-36	1.2 x 20	M5 x 16	M8+M10	0.85	1.19
FRSR 38-43 M8 / M10	534138	50	1-1/4"	38-43	1.2 x 20	M5 x 20	M8+M10	0.85	1.19
FRSR 47-51 M8 / M10	534139	50	1-1/2"	47-51	1.2 x 20	M5 x 20	M8+M10	0.85	1.19
FRSR 53-58 M8 / M10	534140	50	-	53-58	1.2 x 20	M5 x 20	M8+M10	0.85	1.19
FRSR 60-64 M8 / M10	534141	50	2"	60-64	1.2 x 20	M5 x 20	M8+M10	0.85	1.19
FRSR 63-67 M8 / M10	534142	25	65	63-67	1.2 x 20	M5 x 20	M8+M10	0.85	1.19
FRSR 68-72 M8 / M10	534143	25	-	68-72	1.5 x 20	M6 x 20	M8+M10	0.85	1.19
FRSR 75-80 M8 / M10	534144	25	2-1/2"	75-80	1.5 x 20	M6 x 20	M8+M10	0.85	1.19
FRSR 81-86 M8 / M10	534145	25	-	81-86	1.5 x 20	M6 x 20	M8+M10	1.6	2.24
FRSR 87-92 M8 / M10	534146	25	3"	87-92	1.5 x 20	M6 x 20	M8+M10	1.6	2.24
FRSR 99-105 M8 / M10	534147	20	3-1/2"	99-105	2.0 x 20	M6 x 20	M8+M10	1.6	2.24
FRSR 107-112 M8 / M10	534148	20	-	107-112	2.0 x 20	M6 x 20	M8+M10	1.6	2.24
FRSR 113-118 M8 / M10	534149	10	4"	113-118	2.0 x 20	M6 x 20	M8+M10	2.2	3.08
FRSR 125-130 M8 / M10	534150	10	-	125-130	2.0 x 20	M6 x 20	M8+M10	2.2	3.08
FRSR 138-142 M8 / M10	534151	10	5"	138-142	2.0 x 20	M6 x 20	M8+M10	2.2	3.08
FRSR 159-166 M8 / M10	534152	8	6"	159-166	2.0 x 20	M6 x 20	M8+M10	2.2	3.08
FRSR 200-212 M8 / M10	534153	8	-	200-212	2.0 x 20	M6 x 20	M8+M10	2.5	3.5
FRSR 215-220 M8 / M10	534154	8	8"	215-220	2.0 x 20	M6 x 20	M8+M10	2.5	3.5